

# VEGA™

V2 | PENDANT AMBIENT LUMINAIRE

## OVERVIEW

### Lumens

Up to 1150 (direct), 1300 (indirect) lm/ft

### CRI

90+

### CCT

2700K, 3000K, 3500K, 4000K  
5 Channel Color Tuning, RGB uplight

### Voltage

120-277V

### Dimming

0-10V, 100% down to 1%

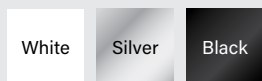
### Operating Temperature

-22°F to +131°F

### Projected Lifetime

>240,000 Hours (L80);  
>110,000 Hours (L90)

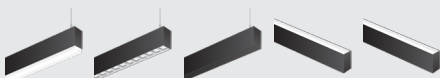
### Standard Textured Finishes



Specialized & Custom colors available.

### Customization

#### Optional Lens



#### Control Compatible



Introducing the Vega™ [vay-gah], a sleek 2 7/16" wide linear architectural luminaire. The Vega™ delivers exceptional illumination, with a sleek profile making it perfect for offices, lobbies, libraries, and commercial spaces. From minimalistic layouts to complex configurations illuminate your space with style and flexibility.

### Features

- Versatile Sizing: choose from standard lengths ranging between 2' to 8' or tailor it precisely with custom lengths in 1-foot increments.
- Profile measurements: 2.44" Wide x 5" High
- Dual Circuit Option: allows independent dimming of both direct and indirect lighting for a personalized ambiance.
- Illuminate with Ease: our Light Engine features an aluminum core LED board seamlessly integrated onto a sleek white extruded chassis. Complete with an integral driver and convenient quick electrical disconnects, it enables rapid, tool-less servicing for hassle-free maintenance.
- Premium Build: durable extruded aluminum with a refined powder coat finish.
- Extruded Acrylic Lens: Direct - Satin Sheen, Indirect - Transparent
- Enhance your customization options with optional lenses, allowing you to tailor the lighting experience to your specific needs and preferences.
- Create seamless, uninterrupted illumination with the ability to effortlessly connect luminaires for a continuous run, ensuring a sleek and cohesive lighting solution throughout your space.
- Enable seamless integration with various control systems for effortless management and customization of your lighting environment.

**10 YR**

Warranty Available<sup>9</sup>

**BAA**

Compliant Available

**BUILD WORKSHEET**

Contact sales representative to order.

Sample Code: V28HHBFCUSWE

V2				U							
SERIES*	LENGTH	DIRECT OUTPUT <sup>1</sup>	INDIRECT OUTPUT <sup>1</sup>	DIRECT CCT	INDIRECT CCT	DIRECT LENS	INDIRECT LENS	VOLTAGE	WIRING	FINISH	
V2 Vega™ Pendant	2 2FT	L Low 7.5W/FT	L Low 7.5W/FT	A 2700K	A 2700K	F Frost, Standard	C Clear, Standard	U 120-277V	S Standard	W Textured White	
	3 3FT	M Mid 10W/FT	M Mid 10W/FT	B 3000K	B 3000K	A 1/2" Drop Lens	A Asymmetric				
	4 4FT	H High 15W/FT	H High 15W/FT	C 3500K	C 3500K	B 1 1/2" Drop Lens	B Batwing				
	6 6FT			Blank Direct Only	D 4000K	D 4000K	L Louver				Blank Direct Only
	8 8FT				5 5 Channel Tuning <sup>2</sup>	5 5 Channel Tuning	K Black Lens				
	C Custom Length*					C RGB Uplight <sup>3</sup>					
					Blank Direct Only						

MOUNTING	SENSOR	CONTROLS	EMERGENCY
A 24" Cable	A Daylight/Motion Occupancy <sup>7</sup>	C Custom <sup>8</sup>	E Emergency Backup
B 48" Cable	Blank None	Blank None	Blank None
C 60" Cable			
D 72" Cable			
E 96" Cable			
F 120" Cable			
G 150" Cable			
H 180" Cable			
I 240" Cable			

\* Consult with sales representative for custom length, finishes and lead time.  
<sup>1</sup> See Page 3 for output information.  
<sup>2</sup> 5 Channel Tuning options only available at High Output setting.  
<sup>3</sup> See page 5 uplight RGB options.  
<sup>4</sup> Dual circuit offered with 6 wire cord - two hots, neutral, ground, and 0-10V dimming. (Direct/Indirect version only)  
<sup>5</sup> All finishes are textured unless specified otherwise by the customer.  
<sup>6</sup> All orders under 25 linear feet will require a one-time set up charge. Please consult factory for charge.  
<sup>7</sup> Default sensor is the Enlighted Micro, see page 6.  
<sup>8</sup> Consult sales representative for custom controls.  
<sup>9</sup> 5 Year Warranty is Standard unless specified.

**10 YR**  
Warranty  
Available<sup>9</sup>

**BAA**  
Compliant  
Available

Project: \_\_\_\_\_

Catalog #: \_\_\_\_\_

Quantity: \_\_\_\_\_ Date: \_\_\_\_\_

**WATTAGE/LUMEN CHART\***

Lumen outputs shown are for 4000K.

**Direct (Downlight)**

Size	2FT	3FT	4FT	6FT	8FT
------	-----	-----	-----	-----	-----

**LOW** (7.5W per foot)

Wattage	15W	22.5W	30W	45W	60W
Lumens	1410	2115	2820	4230	5640

**MID** (10W per foot)

Wattage	20W	30W	40W	60W	80W
Lumens	1960	2940	3920	5880	7840

**HIGH** (15W per foot)

Wattage	30W	45W	60W	90W	120W
Lumens	2790	4185	5580	8370	11160

**Indirect (Uplight)**

Size	2FT	3FT	4FT	6FT	8FT
------	-----	-----	-----	-----	-----

**LOW** (7.5W per foot)

Wattage	15W	22.5W	30W	45W	60W
Lumens	1410	2178	2905	4357	5809

**MID** (10W per foot)

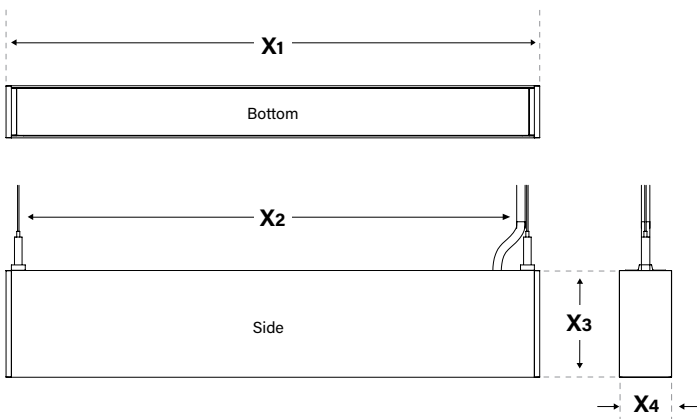
Wattage	20W	30W	40W	60W	80W
Lumens	2019	3028	4038	6056	8075

**HIGH** (15W per foot)

Wattage	30W	45W	60W	90W	120W
Lumens	2874	4311	5747	8621	11495

\*For other color temps, use the following lumen factors: 3500K: 0.95 • 3000K: 0.90 • 2700K: 0.85  
For total system wattage and lumen output, add the direct and indirect values based on output settings.

**DIMENSIONS**

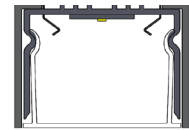


Size	2FT	3FT	4FT	6FT	8FT
X1	24.3"	36.3"	48.3"	72.3"	96.3"
X2	23.4"	35.4"	47.4"	71.4"	95.4"
X3	5"				
X4	2.44"				

Custom lengths available in 1-foot increments.

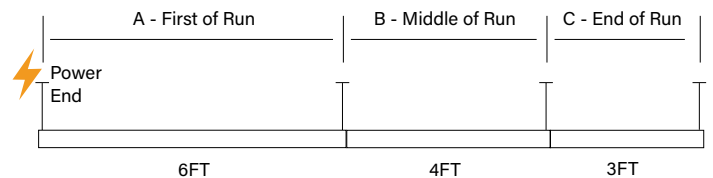
**REGRESSED LENS SYSTEM**

Our innovative design ensures the lens securely snaps into place, eliminating the risk of improper seating or lens fall out.



**CONTINUOUS RUN**

When placing an order for a continuous run, each section is shipped with a label indicating its designated "Section of Run," which is specified at the end of the part number. An illustration of a 13FT continuous run is provided to the right. For further details, contact sales representative.



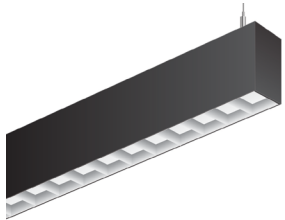
## OPTIONAL LENSES

### Direct Lenses



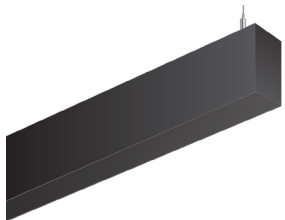
#### Drop Lens (½" or 1 ½")

Frosted white PMMA lens extending 0.5" or 1.5" from the luminaire housing. The end caps are chemically welded to the lens.



### Louver

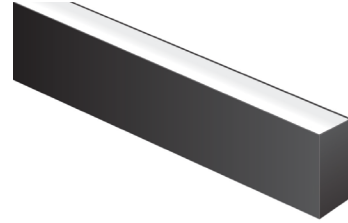
Semi-specular parabolic louver made of 22 GA. aluminum. The louver has a depth of 3/4" and a spacing of 2", ensuring effective glare control.



### Black Lens

Frosted black lens.

### Indirect Lenses



#### Asymetric

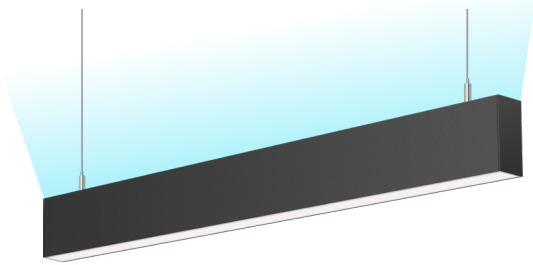
Frosted PMMA lens with a built-in TIR optic. The highest candela is achieved at a 60-degree angle from Nadir.



#### Batwing

Transparent PMMA lens with an integrated TIR optic, yielding a wide and shallow batwing distribution. Delivers superb uniformity when the luminaire is installed near the ceiling.

**SPECIALIZED LED STATIC COLORS**



01 - Violet	06 - PC Lime	11 - PC Red Orange
02 - Royal Blue	07 - PC Mint	12 - Red
03 - Blue	08 - Amber	13 - Photo Red
04 - Cyan	09 - PC Amber	14 - Far Red
05 - Green	10 - Red Orange	15 - PC Purple

**SPECIALIZED FINISH COLORS**

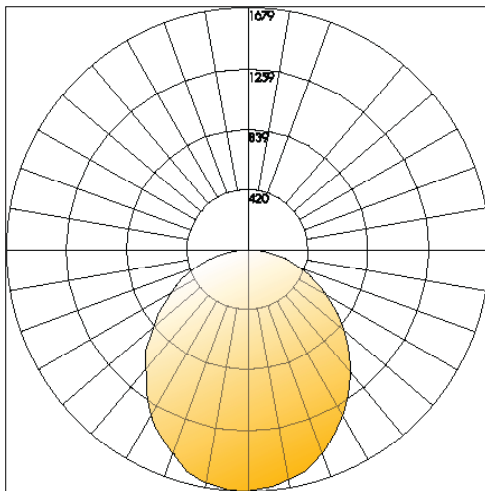
Additional colors are available through RAL Color



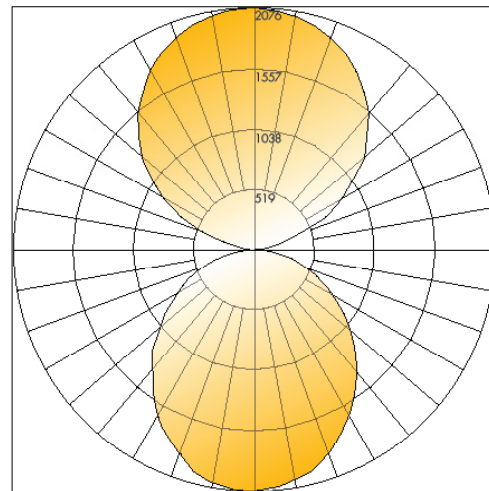
01 - RAL #7035 Light Grey	09 - RAL #6011 Reseda Green	17 - RAL #2004 Pure Orange
02 - RAL #7038 Agate Grey	10 - RAL #8028 Terra Brown	18 - RAL #4010 Telemagenta
03 - RAL #9005 Jet Black	11 - RAL #8017 Chocolate Brown	19 - RAL #3027 Raspberry Red
04 - RAL #9005 Pure White	12 - RAL #7004 Signal Grey	20 - RAL #6027 Light Green
05 - RAL #9003 Signal White	13 - RAL #7016 Anthracite Grey	21 - RAL #5015 Sky Blue
06 - RAL #9001 Cream	14 - RAL #7031 Blue Grey	22 - RAL #6019 Pastel Green
07 - RAL #7044 Silk Grey	15 - RAL #7039 Quartz Grey	23 - RAL #1018 Zinc Yellow
08 - RAL #8025 Pale Brown	16 - RAL #4006 Traffic Purple	24 - RAL #7024 Graphite Grey

All orders under 25 linear feet will require a one-time set up charge.  
Please consult factory for charge.

**PHOTOMETRICS**



Polar Graph - 4' High Output 4000K  
Delivered Lumens: 5580 CRI: 97



Polar Graph - 4' High Direct / High Indirect 4000K  
Delivered Lumens: 11327  
(5580 Direct / 5747 Indirect) CRI: 97

 **CONTROLS**

**enlighted**

**MICRO SENSOR - Daylight / Motion / Occupancy**

A complete sensing and lighting control node powered from its attached light fixture. An innovative carrier-based mounting design supports easy installation and replacement. With integrated wireless communications for data transmission and remote configuration as well as autonomous fixture-level control, this sensor brings advanced lighting automation to a whole new level.

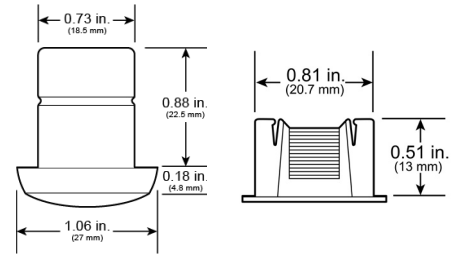


**FEATURES**

- |                                  |   |
|----------------------------------|---|
| Enlighted Sensor Interface (ESI) | Room and Zone Control                   |
| Localized Lighting Control       | IoT Sensing Node                        |
| Edge Sensing                     | Standards-Based Networking and Security |
| Bluetooth Low Energy             | Data Privacy                            |
| Occupancy and Thermal Sensing    | Driver Compatibility                    |
| Tunable White                    |   |
| Daylight Harvesting              |   |

**SENSOR COVERAGE PATTERNS**

Incorporates an optical Fresnel lens that works with the digital Passive Infrared (PIR) sensor to detect occupancy and motion. The multifaceted lens focuses light onto the PIR to produce an all-encompassing field of view through aggregation of many narrow fields of view.



**SMART CONTROLS\***

The Vega™, seamlessly integrates with a range of advanced sensor solutions from industry leaders such as Lutron, Enlighted, and Avi-on. With the integration of smart sensors, you can achieve greater energy savings compared to traditional systems but also unlock additional functional features. These sensors enable the luminaire to adapt to the needs and behaviors of occupants, resulting in a smart building solution.



Illuminate your commercial space flawlessly with Lutron, where we understand that every environment has unique lighting requirements. Whether it's hospitality or office settings, we tailor lighting, shades, and control solutions to match your project's exact needs.



Discover the power of Enlighted's IoT solution, featuring a patented smart sensor. This cutting-edge technology measures ambient light, motion (PIR), energy consumption, and temperature, all while offering Bluetooth® capabilities and wireless connectivity.



Experience unparalleled ease and innovation with Avi-on®'s leading IoT platform for wireless lighting controls. Our patented no gateway architecture and industry-leading commissioning and scalability management tools ensure easy installation, seamless usability, and cost-effectiveness—even for multi-thousand device systems.

\*Not all compatible smart controls may be listed. Please contact sale representative.